

Killing Watts: Ghost Loads at the University of Colorado Colorado Springs

John E. Davis

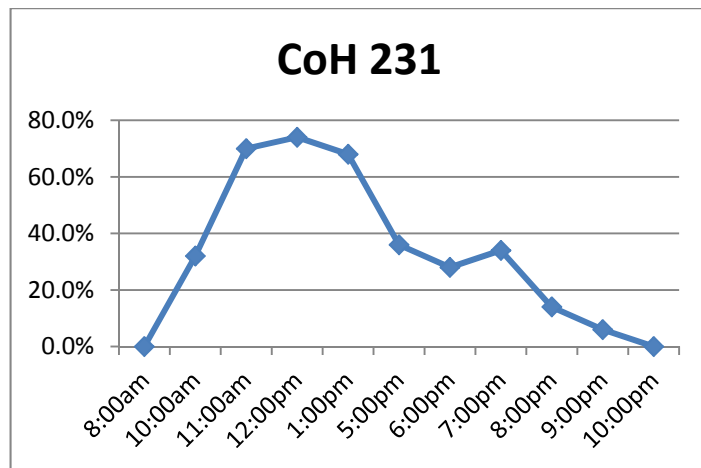
University of Colorado at Colorado Springs

Supplemental data to accompany the original article. This section includes data sets on computer usage for specific computer labs at the University of Colorado Colorado Springs campus and calculations of total costs, CO₂ emissions, and kWh.

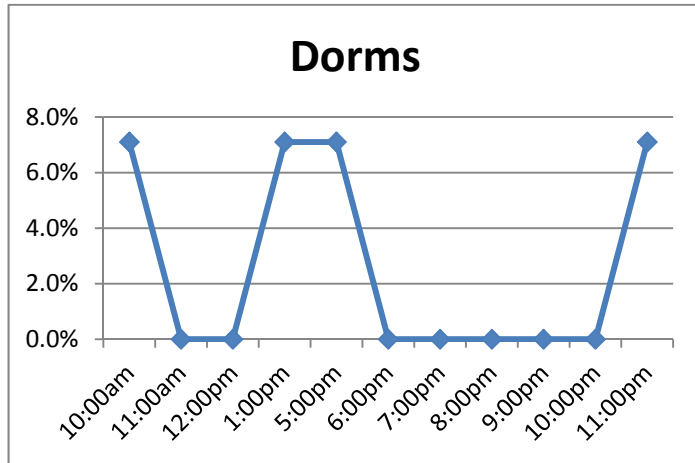
Appendix I: Computers in Use Data

Data for Wednesday, March 18, 2009

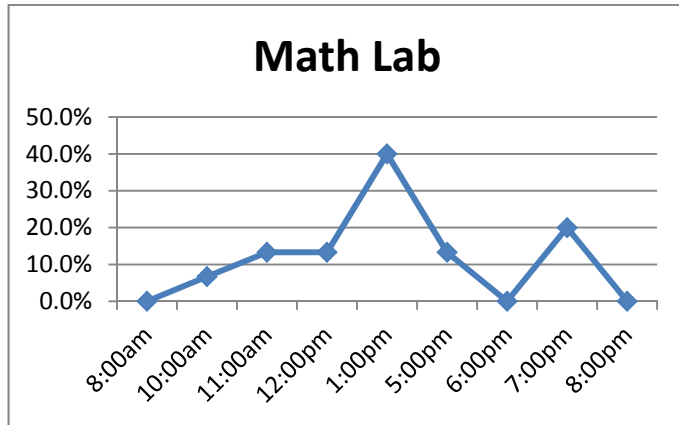
| Time | % Computers in use |
|---------|--------------------|
| 8:00am | 0.0% |
| 10:00am | 32.0% |
| 11:00am | 70.0% |
| 12:00pm | 74.0% |
| 1:00pm | 68.0% |
| 5:00pm | 36.0% |
| 6:00pm | 28.0% |
| 7:00pm | 34.0% |
| 8:00pm | 14.0% |
| 9:00pm | 6.0% |
| 10:00pm | 0.0% |



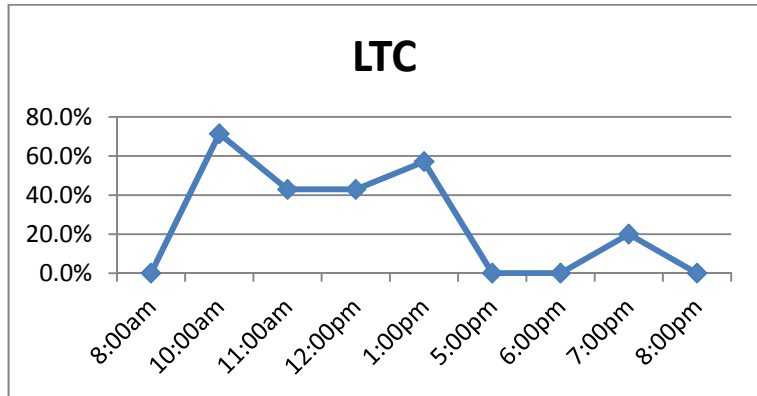
| Time | % Computers in use |
|---------|--------------------|
| 10:00am | 7.1% |
| 11:00am | 0.0% |
| 12:00pm | 0.0% |
| 1:00pm | 7.1% |
| 5:00pm | 7.1% |
| 6:00pm | 0.0% |
| 7:00pm | 0.0% |
| 8:00pm | 0.0% |
| 9:00pm | 0.0% |
| 10:00pm | 0.0% |
| 11:00pm | 7.1% |



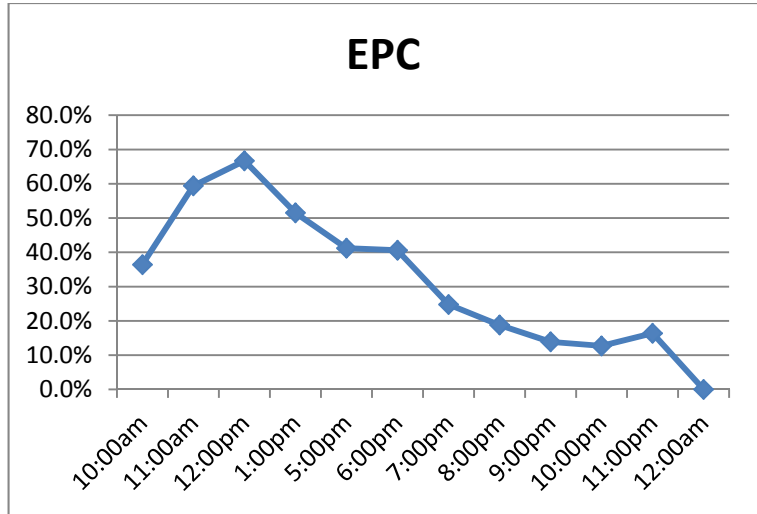
| Time | % Computers in use |
|---------|--------------------|
| 8:00am | 0.0% |
| 10:00am | 6.7% |
| 11:00am | 13.3% |
| 12:00pm | 13.3% |
| 1:00pm | 40.0% |
| 5:00pm | 13.3% |
| 6:00pm | 0.0% |
| 7:00pm | 20.0% |
| 8:00pm | 0.0% |



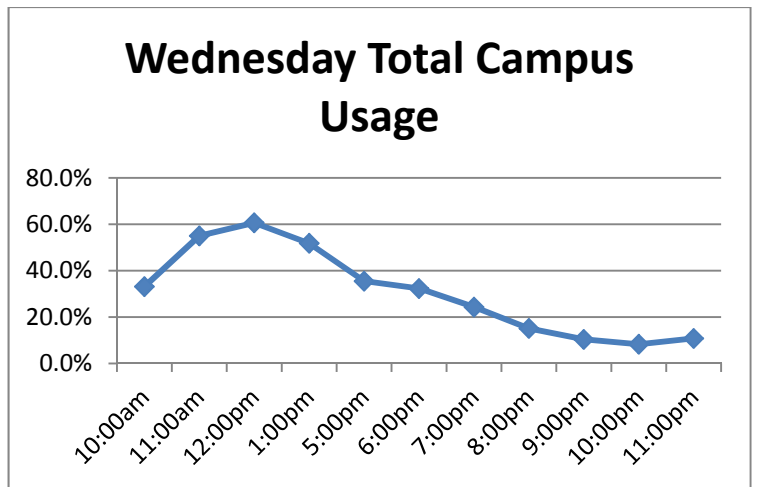
| Time | % Computers in use |
|---------|--------------------|
| 8:00am | 0.0% |
| 10:00am | 71.4% |
| 11:00am | 42.9% |
| 12:00pm | 42.9% |
| 1:00pm | 57.1% |
| 5:00pm | 0.0% |
| 6:00pm | 0.0% |
| 7:00pm | 20.0% |
| 8:00pm | 0.0% |



| Time | % Computers in use |
|---------|--------------------|
| 10:00am | 36.4% |
| 11:00am | 59.4% |
| 12:00pm | 66.7% |
| 1:00pm | 51.5% |
| 5:00pm | 41.2% |
| 6:00pm | 40.6% |
| 7:00pm | 24.8% |
| 8:00pm | 18.8% |
| 9:00pm | 13.9% |
| 10:00pm | 12.7% |
| 11:00pm | 16.4% |
| 12:00am | 0.0% |

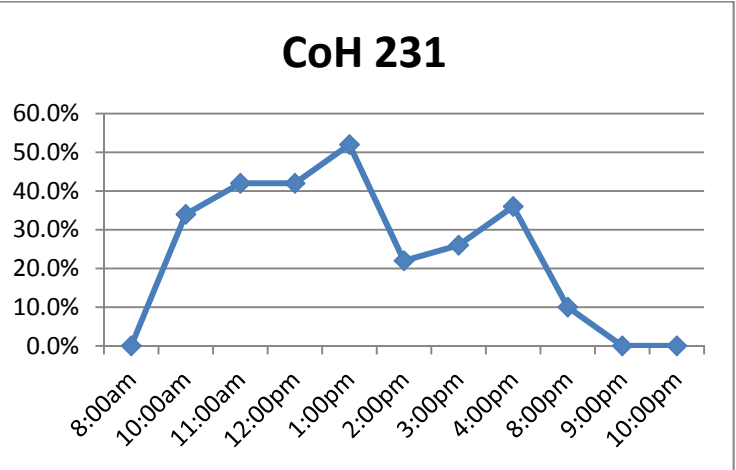


| Time | % Computers in use |
|---------|--------------------|
| 10:00am | 33.1% |
| 11:00am | 55.0% |
| 12:00pm | 60.6% |
| 1:00pm | 51.8% |
| 5:00pm | 35.5% |
| 6:00pm | 32.3% |
| 7:00pm | 24.3% |
| 8:00pm | 15.1% |
| 9:00pm | 10.4% |
| 10:00pm | 8.3% |
| 11:00pm | 10.8% |

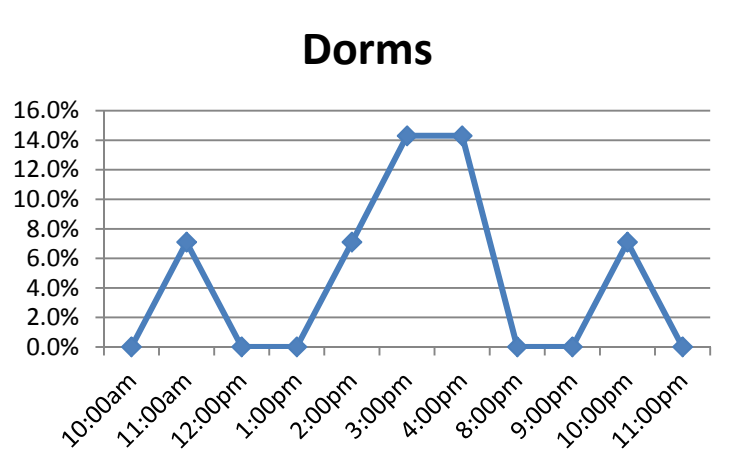


Data for Thursday, March 19, 2009

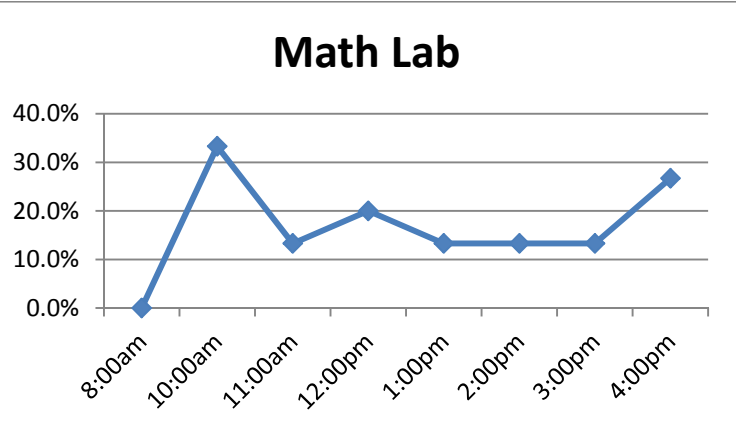
| Time | % Computers in use |
|---------|--------------------|
| 8:00am | 0.0% |
| 10:00am | 34.0% |
| 11:00am | 42.0% |
| 12:00pm | 42.0% |
| 1:00pm | 52.0% |
| 2:00pm | 22.0% |
| 3:00pm | 26.0% |
| 4:00pm | 36.0% |
| 8:00pm | 10.0% |
| 9:00pm | 0.0% |
| 10:00pm | 0.0% |



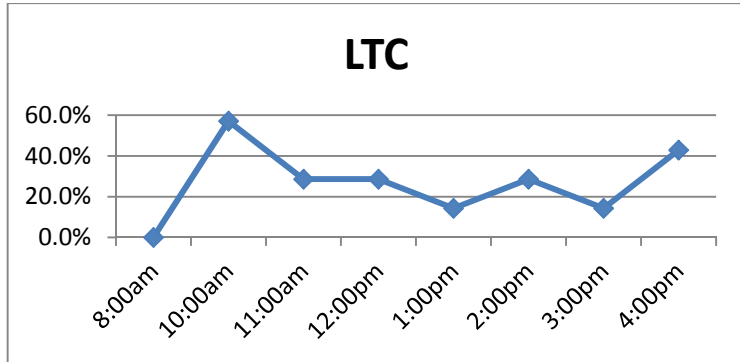
| Time | % Computers in use |
|---------|--------------------|
| 10:00am | 0.0% |
| 11:00am | 7.1% |
| 12:00pm | 0.0% |
| 1:00pm | 0.0% |
| 2:00pm | 7.1% |
| 3:00pm | 14.3% |
| 4:00pm | 14.3% |
| 8:00pm | 0.0% |
| 9:00pm | 0.0% |
| 10:00pm | 7.1% |
| 11:00pm | 0.0% |



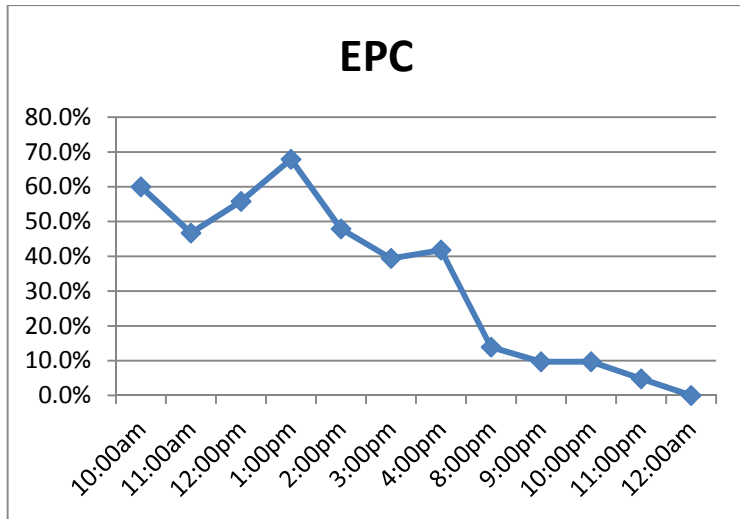
| Time | % Computers in use |
|---------|--------------------|
| 8:00am | 0.0% |
| 10:00am | 33.3% |
| 11:00am | 13.3% |
| 12:00pm | 20.0% |
| 1:00pm | 13.3% |
| 2:00pm | 13.3% |
| 3:00pm | 13.3% |
| 4:00pm | 26.7% |



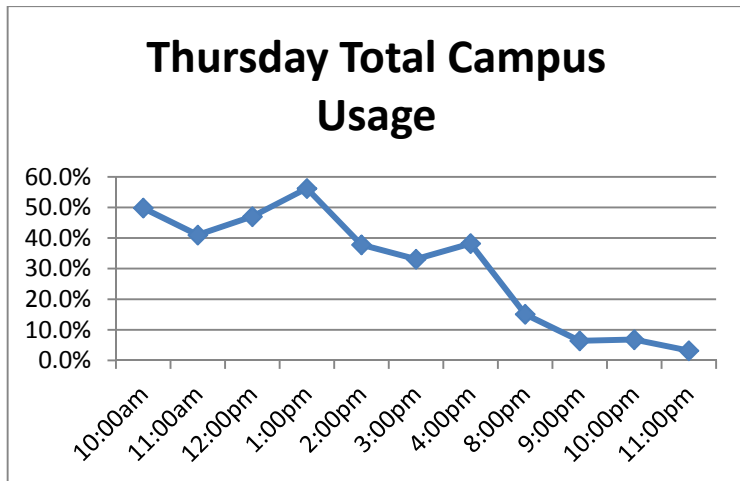
| Time | % Computers in use |
|---------|--------------------|
| 8:00am | 0.0% |
| 10:00am | 57.1% |
| 11:00am | 28.6% |
| 12:00pm | 28.6% |
| 1:00pm | 14.3% |
| 2:00pm | 28.6% |
| 3:00pm | 14.3% |
| 4:00pm | 42.9% |



| Time | % Computers in use |
|---------|--------------------|
| 10:00am | 60.0% |
| 11:00am | 46.7% |
| 12:00pm | 55.8% |
| 1:00pm | 67.9% |
| 2:00pm | 47.9% |
| 3:00pm | 39.4% |
| 4:00pm | 41.8% |
| 8:00pm | 13.9% |
| 9:00pm | 9.7% |
| 10:00pm | 9.7% |
| 11:00pm | 4.8% |
| 12:00am | 0.0% |

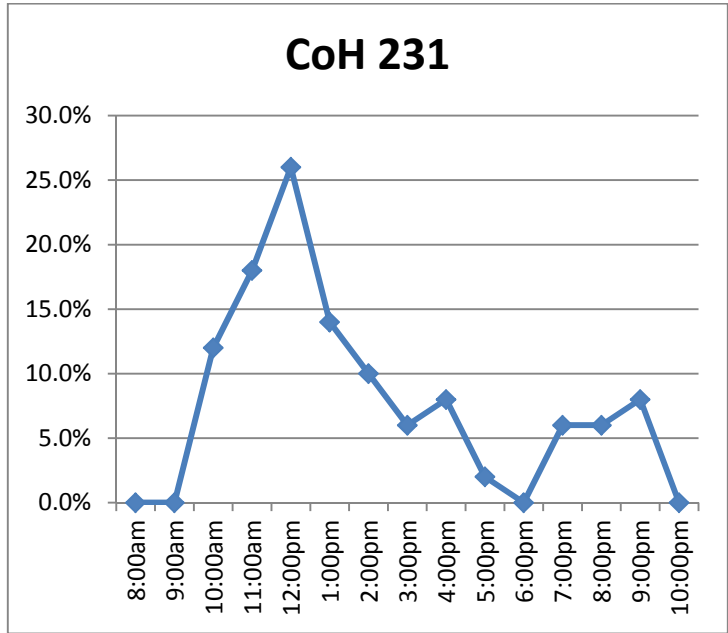


| Time | % Computers in use |
|---------|--------------------|
| 10:00am | 49.8% |
| 11:00am | 41.0% |
| 12:00pm | 47.0% |
| 1:00pm | 56.2% |
| 2:00pm | 37.8% |
| 3:00pm | 33.1% |
| 4:00pm | 38.2% |
| 8:00pm | 15.1% |
| 9:00pm | 6.4% |
| 10:00pm | 6.8% |
| 11:00pm | 3.2% |

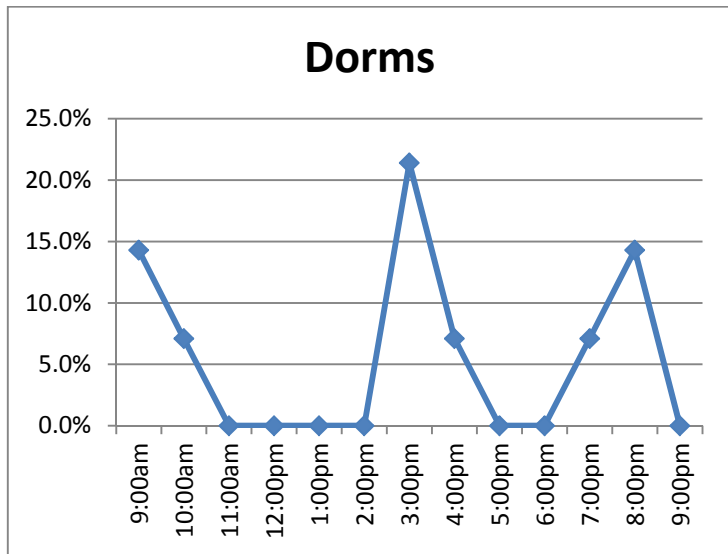


Data for Friday, March 20, 2009

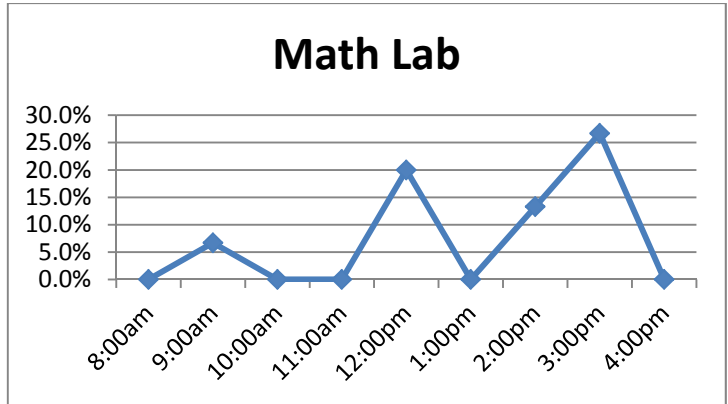
| Time | % Computers in use |
|---------|--------------------|
| 8:00am | 0.0% |
| 9:00am | 0.0% |
| 10:00am | 12.0% |
| 11:00am | 18.0% |
| 12:00pm | 26.0% |
| 1:00pm | 14.0% |
| 2:00pm | 10.0% |
| 3:00pm | 6.0% |
| 4:00pm | 8.0% |
| 5:00pm | 2.0% |
| 6:00pm | 0.0% |
| 7:00pm | 6.0% |
| 8:00pm | 6.0% |
| 9:00pm | 8.0% |
| 10:00pm | 0.0% |



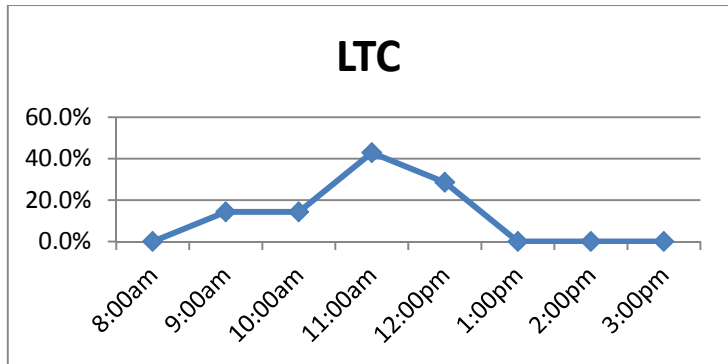
| Time | % Computers in use |
|---------|--------------------|
| 9:00am | 14.3% |
| 10:00am | 7.1% |
| 11:00am | 0.0% |
| 12:00pm | 0.0% |
| 1:00pm | 0.0% |
| 2:00pm | 0.0% |
| 3:00pm | 21.4% |
| 4:00pm | 7.1% |
| 5:00pm | 0.0% |
| 6:00pm | 0.0% |
| 7:00pm | 7.1% |
| 8:00pm | 14.3% |
| 9:00pm | 0.0% |



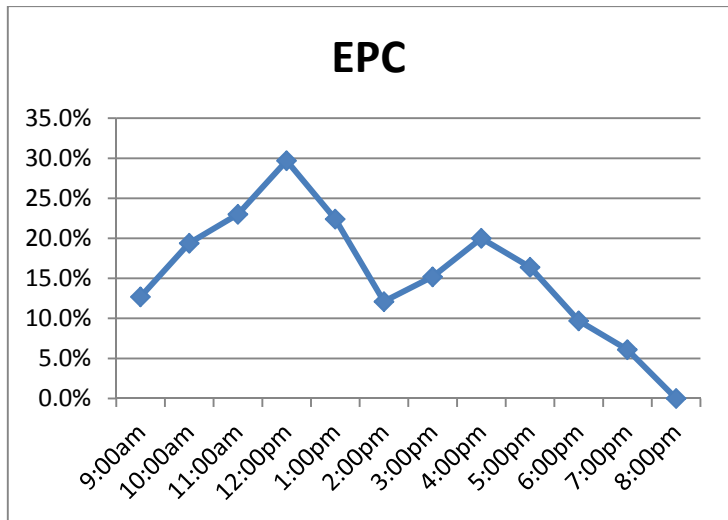
| Time | % Computers in use |
|---------|--------------------|
| 8:00am | 0.0% |
| 9:00am | 6.7% |
| 10:00am | 0.0% |
| 11:00am | 0.0% |
| 12:00pm | 20.0% |
| 1:00pm | 0.0% |
| 2:00pm | 13.3% |
| 3:00pm | 26.7% |
| 4:00pm | 0.0% |



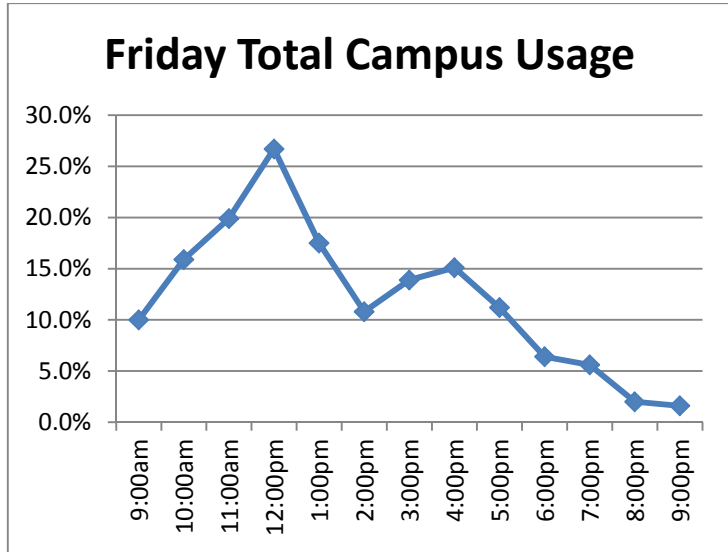
| Time | % Computers in use |
|---------|--------------------|
| 8:00am | 0.0% |
| 9:00am | 14.3% |
| 10:00am | 14.3% |
| 11:00am | 42.9% |
| 12:00pm | 28.6% |
| 1:00pm | 0.0% |
| 2:00pm | 0.0% |
| 3:00pm | 0.0% |



| Time | % Computers in use |
|---------|--------------------|
| 9:00am | 12.7% |
| 10:00am | 19.4% |
| 11:00am | 23.0% |
| 12:00pm | 29.7% |
| 1:00pm | 22.4% |
| 2:00pm | 12.1% |
| 3:00pm | 15.2% |
| 4:00pm | 20.0% |
| 5:00pm | 16.4% |
| 6:00pm | 9.7% |
| 7:00pm | 6.1% |
| 8:00pm | 0.0% |

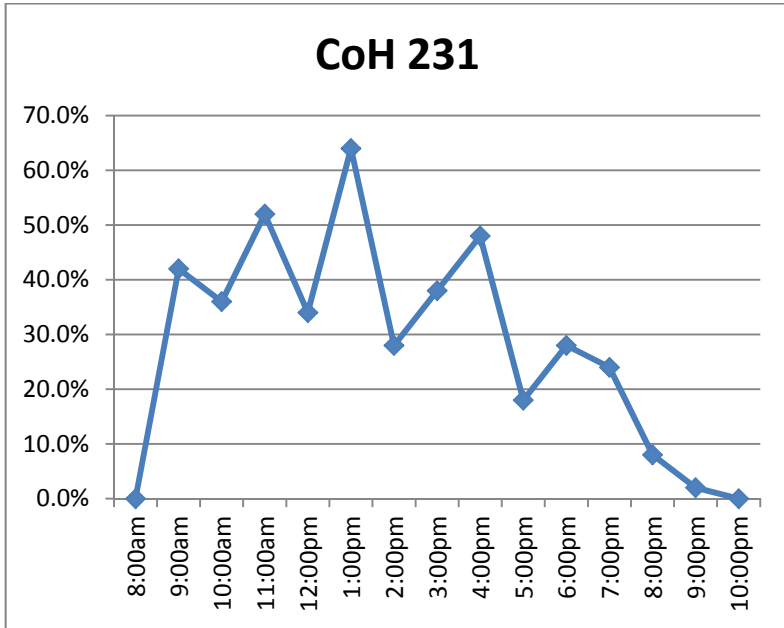


| Time | % Computers in use |
|---------|--------------------|
| 9:00am | 10.0% |
| 10:00am | 15.9% |
| 11:00am | 19.9% |
| 12:00pm | 26.7% |
| 1:00pm | 17.5% |
| 2:00pm | 10.8% |
| 3:00pm | 13.9% |
| 4:00pm | 15.1% |
| 5:00pm | 11.2% |
| 6:00pm | 6.4% |
| 7:00pm | 5.6% |
| 8:00pm | 2.0% |
| 9:00pm | 1.6% |

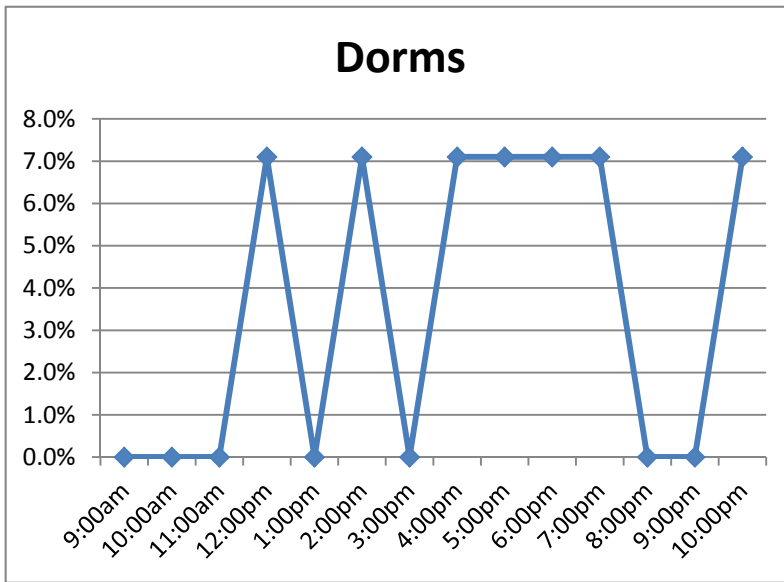


Data for Monday, March 30, 2009

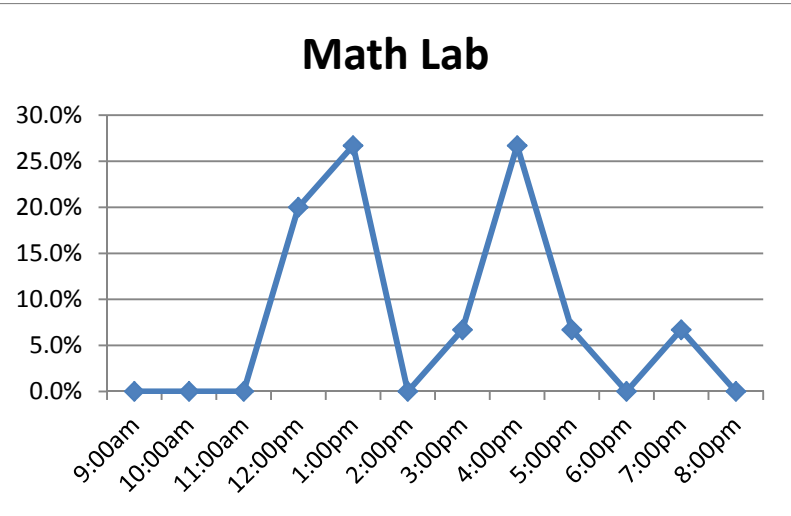
| Time | % Computers in use |
|---------|--------------------|
| 8:00am | 0.0% |
| 9:00am | 42.0% |
| 10:00am | 36.0% |
| 11:00am | 52.0% |
| 12:00pm | 34.0% |
| 1:00pm | 64.0% |
| 2:00pm | 28.0% |
| 3:00pm | 38.0% |
| 4:00pm | 48.0% |
| 5:00pm | 18.0% |
| 6:00pm | 28.0% |
| 7:00pm | 24.0% |
| 8:00pm | 8.0% |
| 9:00pm | 2.0% |
| 10:00pm | 0.0% |



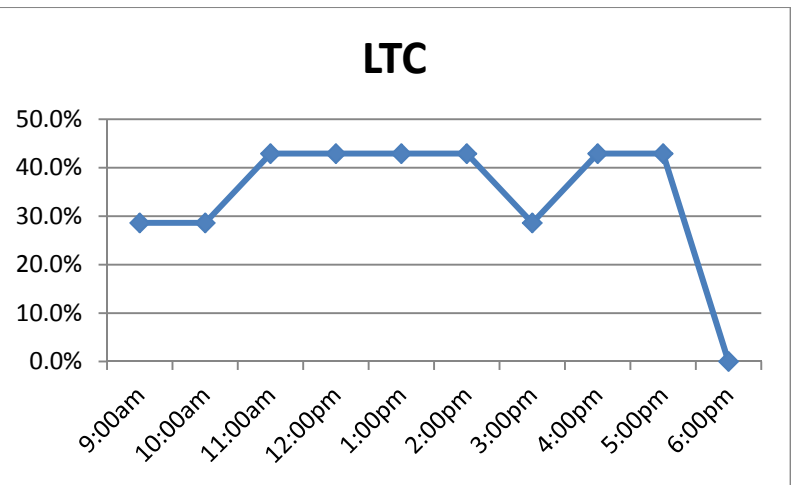
| Time | % Computers in use |
|---------|--------------------|
| 9:00am | 0.0% |
| 10:00am | 0.0% |
| 11:00am | 0.0% |
| 12:00pm | 7.1% |
| 1:00pm | 0.0% |
| 2:00pm | 7.1% |
| 3:00pm | 0.0% |
| 4:00pm | 7.1% |
| 5:00pm | 7.1% |
| 6:00pm | 7.1% |
| 7:00pm | 7.1% |
| 8:00pm | 0.0% |
| 9:00pm | 0.0% |
| 10:00pm | 7.1% |



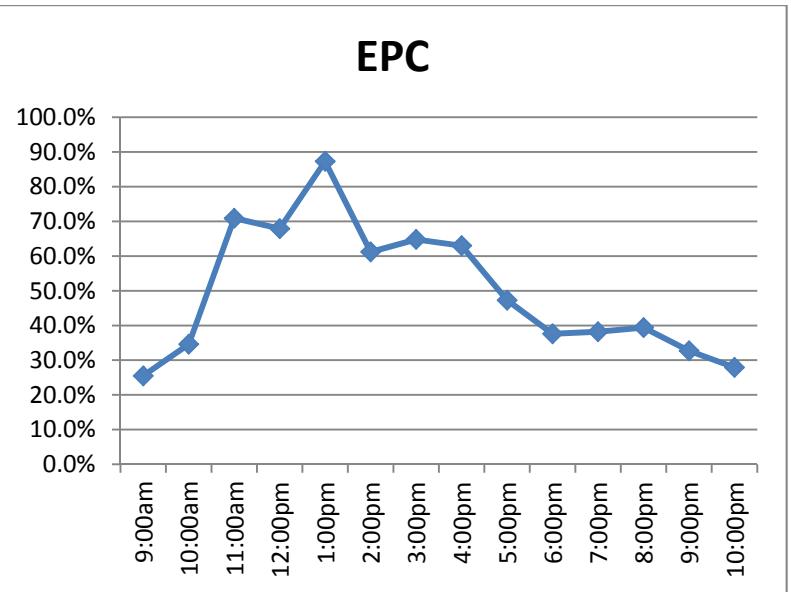
| Time | % Computers in use |
|---------|--------------------|
| 9:00am | 0.0% |
| 10:00am | 0.0% |
| 11:00am | 0.0% |
| 12:00pm | 20.0% |
| 1:00pm | 26.7% |
| 2:00pm | 0.0% |
| 3:00pm | 6.7% |
| 4:00pm | 26.7% |
| 5:00pm | 6.7% |
| 6:00pm | 0.0% |
| 7:00pm | 6.7% |
| 8:00pm | 0.0% |



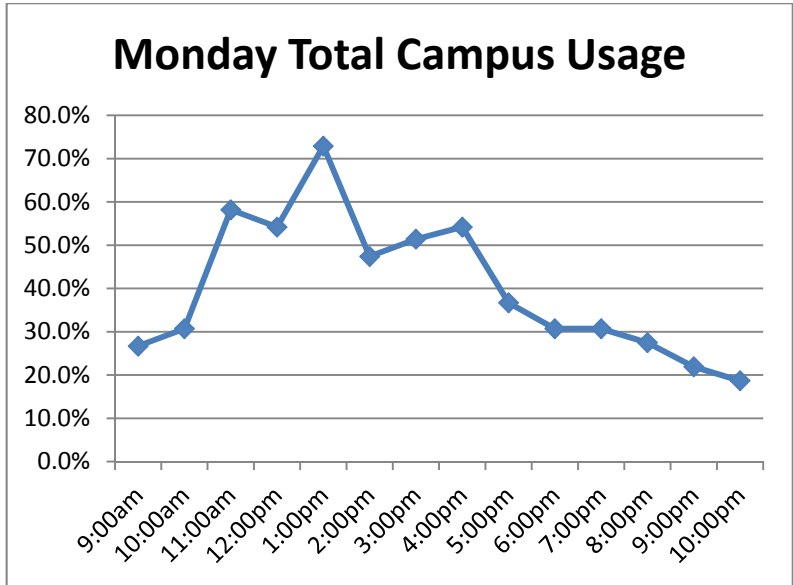
| Time | % Computers in use |
|---------|--------------------|
| 9:00am | 28.6% |
| 10:00am | 28.6% |
| 11:00am | 42.9% |
| 12:00pm | 42.9% |
| 1:00pm | 42.9% |
| 2:00pm | 42.9% |
| 3:00pm | 28.6% |
| 4:00pm | 42.9% |
| 5:00pm | 42.9% |
| 6:00pm | 0.0% |
| 7:00pm | 0.0% |



| Time | % Computers in use |
|---------|--------------------|
| 9:00am | 25.5% |
| 10:00am | 34.6% |
| 11:00am | 70.9% |
| 12:00pm | 67.9% |
| 1:00pm | 87.3% |
| 2:00pm | 61.2% |
| 3:00pm | 64.8% |
| 4:00pm | 63.0% |
| 5:00pm | 47.3% |
| 6:00pm | 37.6% |
| 7:00pm | 38.2% |
| 8:00pm | 39.4% |
| 9:00pm | 32.7% |
| 10:00pm | 27.9% |

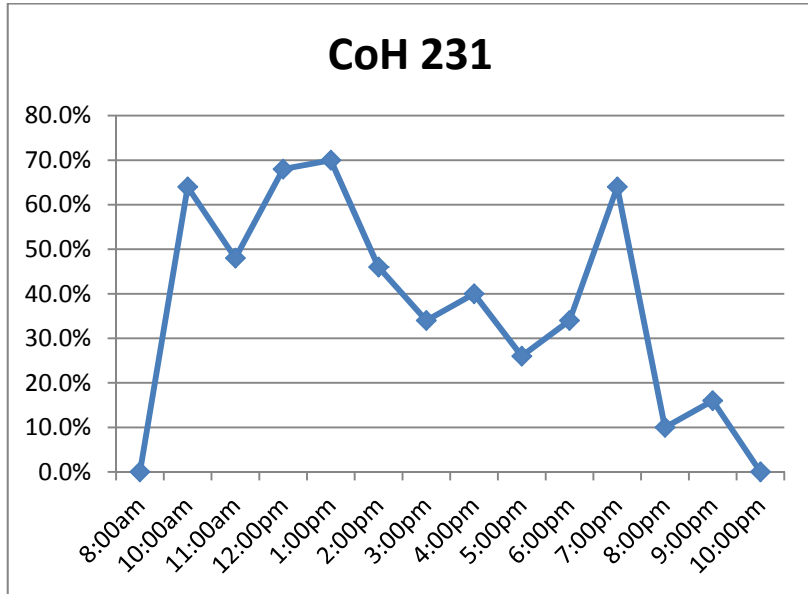


| Time | % Computers in use |
|---------|--------------------|
| 9:00am | 26.7% |
| 10:00am | 30.7% |
| 11:00am | 58.2% |
| 12:00pm | 54.2% |
| 1:00pm | 72.9% |
| 2:00pm | 47.4% |
| 3:00pm | 51.4% |
| 4:00pm | 54.2% |
| 5:00pm | 36.7% |
| 6:00pm | 30.7% |
| 7:00pm | 30.7% |
| 8:00pm | 27.5% |
| 9:00pm | 21.9% |
| 10:00pm | 18.7% |

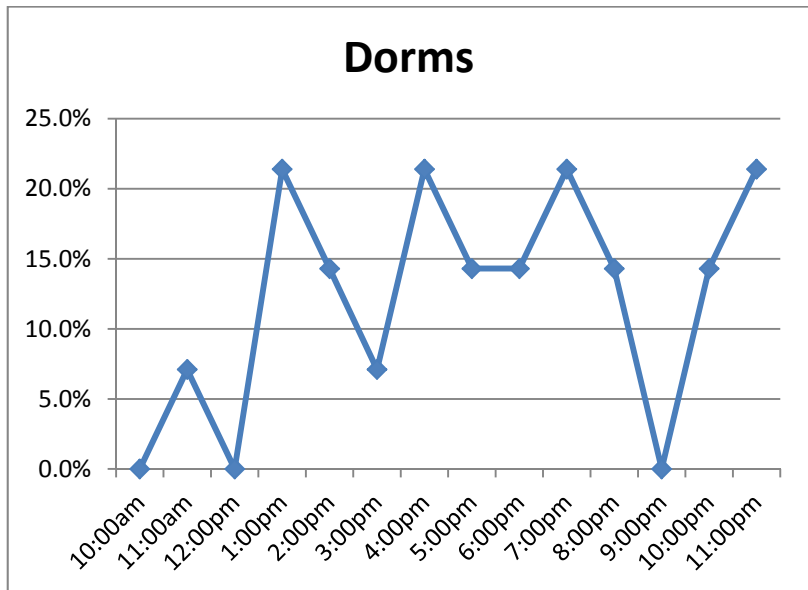


Data for Tuesday, March 31, 2009

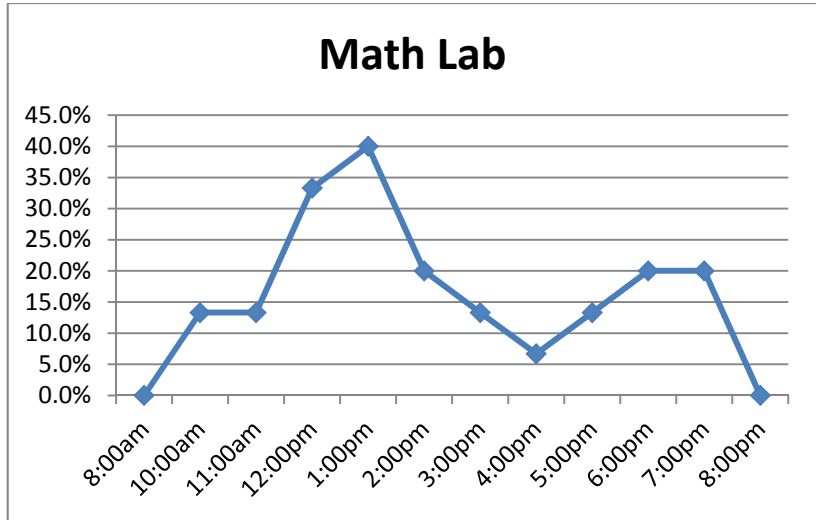
| Time | % Computers in use |
|---------|--------------------|
| 8:00am | 0.0% |
| 10:00am | 64.0% |
| 11:00am | 48.0% |
| 12:00pm | 68.0% |
| 1:00pm | 70.0% |
| 2:00pm | 46.0% |
| 3:00pm | 34.0% |
| 4:00pm | 40.0% |
| 5:00pm | 26.0% |
| 6:00pm | 34.0% |
| 7:00pm | 64.0% |
| 8:00pm | 10.0% |
| 9:00pm | 16.0% |
| 10:00pm | 0.0% |



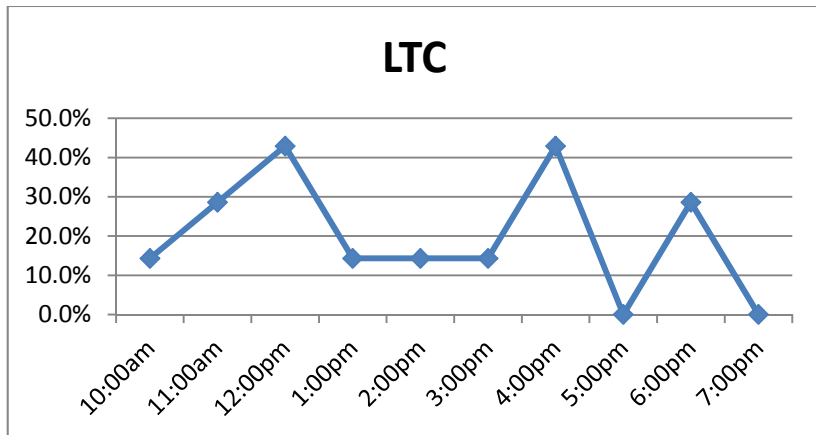
| Time | % Computers in use |
|---------|--------------------|
| 10:00am | 0.0% |
| 11:00am | 7.1% |
| 12:00pm | 0.0% |
| 1:00pm | 21.4% |
| 2:00pm | 14.3% |
| 3:00pm | 7.1% |
| 4:00pm | 21.4% |
| 5:00pm | 14.3% |
| 6:00pm | 14.3% |
| 7:00pm | 21.4% |
| 8:00pm | 14.3% |
| 9:00pm | 0.0% |
| 10:00pm | 14.3% |
| 11:00pm | 21.4% |



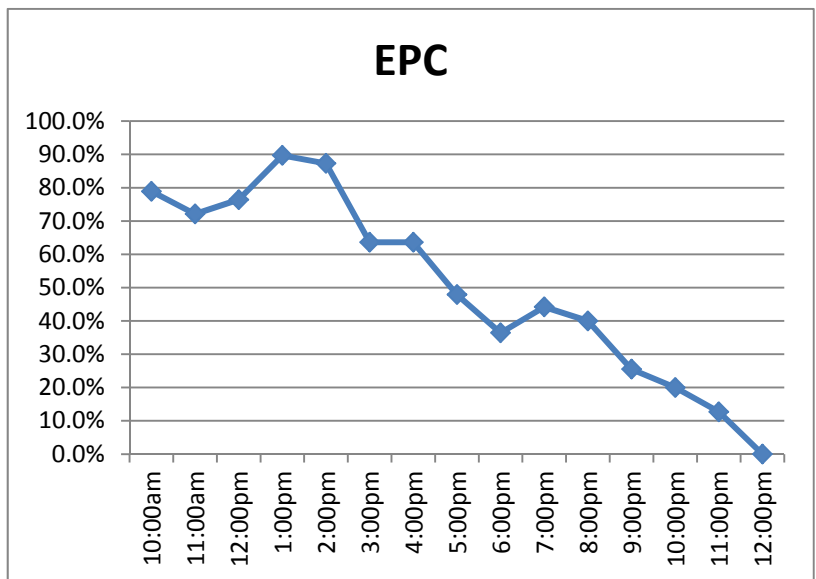
| Time | % Computers in use |
|---------|--------------------|
| 8:00am | 0.0% |
| 10:00am | 13.3% |
| 11:00am | 13.3% |
| 12:00pm | 33.3% |
| 1:00pm | 40.0% |
| 2:00pm | 20.0% |
| 3:00pm | 13.3% |
| 4:00pm | 6.7% |
| 5:00pm | 13.3% |
| 6:00pm | 20.0% |
| 7:00pm | 20.0% |
| 8:00pm | 0.0% |



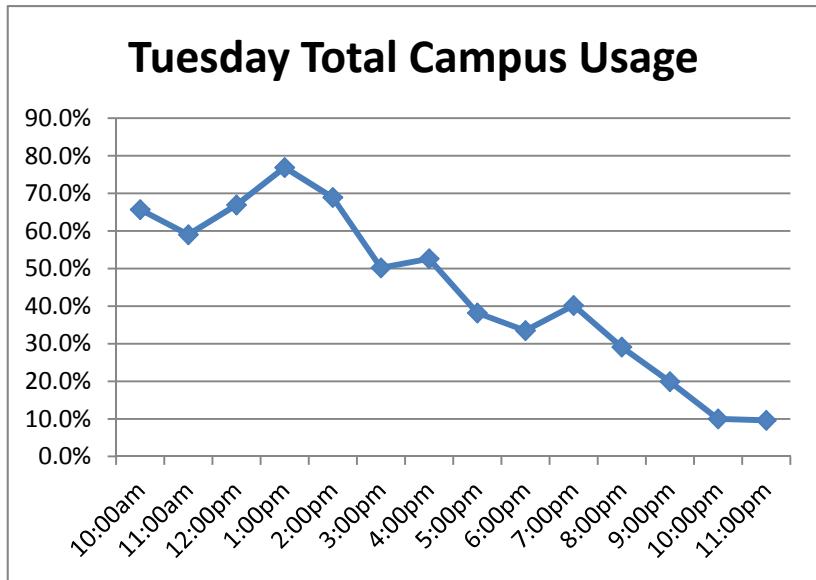
| Time | % Computers in use |
|---------|--------------------|
| 10:00am | 14.3% |
| 11:00am | 28.6% |
| 12:00pm | 42.9% |
| 1:00pm | 14.3% |
| 2:00pm | 14.3% |
| 3:00pm | 14.3% |
| 4:00pm | 42.9% |
| 5:00pm | 0.0% |
| 6:00pm | 28.6% |
| 7:00pm | 0.0% |



| Time | % Computers in use |
|---------|--------------------|
| 10:00am | 78.9% |
| 11:00am | 72.1% |
| 12:00pm | 76.4% |
| 1:00pm | 89.7% |
| 2:00pm | 87.3% |
| 3:00pm | 63.6% |
| 4:00pm | 63.6% |
| 5:00pm | 47.9% |
| 6:00pm | 36.4% |
| 7:00pm | 44.2% |
| 8:00pm | 40.0% |
| 9:00pm | 25.5% |
| 10:00pm | 20.0% |
| 11:00pm | 12.7% |
| 12:00pm | 0.0% |

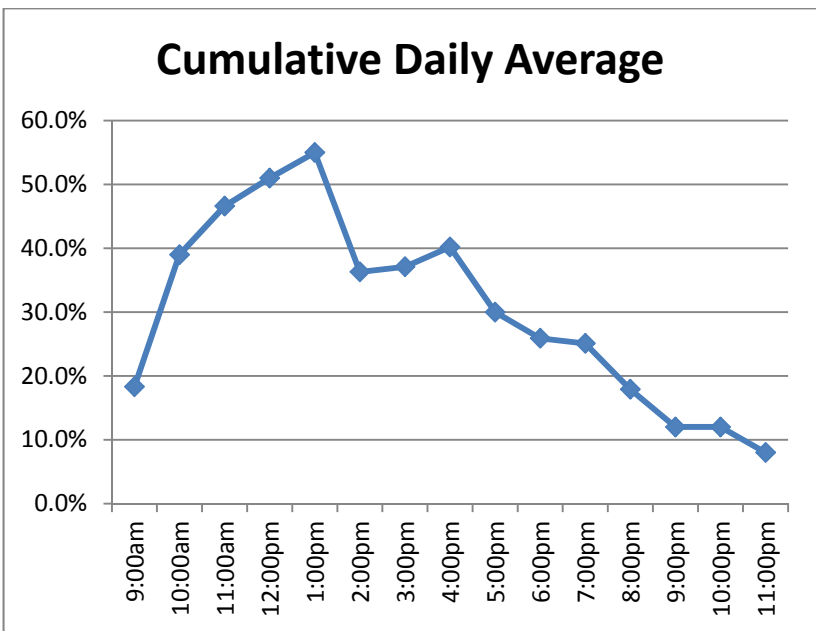


| Time | % Computers in use |
|---------|--------------------|
| 10:00am | 65.7% |
| 11:00am | 59.0% |
| 12:00pm | 66.9% |
| 1:00pm | 76.9% |
| 2:00pm | 68.9% |
| 3:00pm | 50.2% |
| 4:00pm | 52.6% |
| 5:00pm | 38.2% |
| 6:00pm | 33.5% |
| 7:00pm | 40.2% |
| 8:00pm | 29.1% |
| 9:00pm | 19.9% |
| 10:00pm | 10.0% |
| 11:00pm | 9.6% |



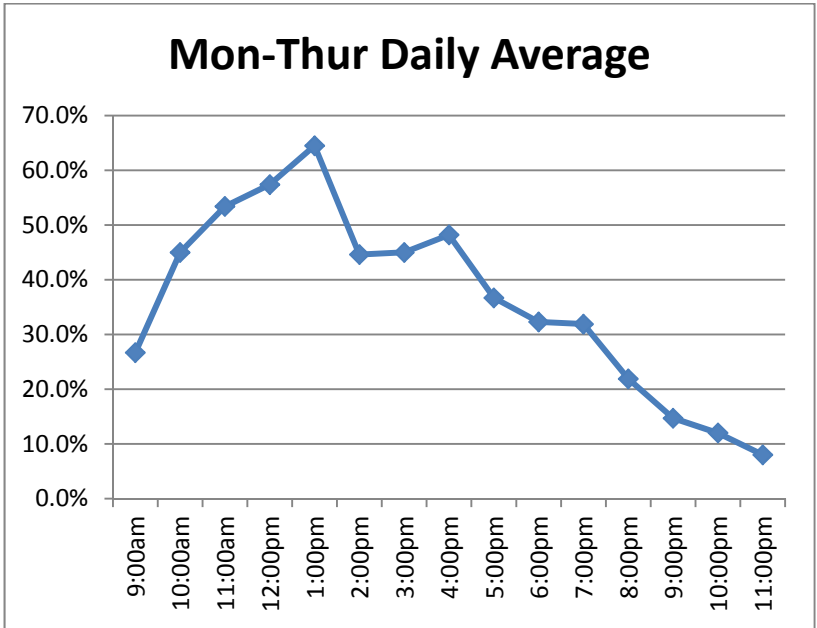
Cumulative Daily Average

| Time | % Computers in use |
|---------|--------------------|
| 9:00am | 18.3% |
| 10:00am | 39.0% |
| 11:00am | 46.6% |
| 12:00pm | 51.0% |
| 1:00pm | 55.0% |
| 2:00pm | 36.3% |
| 3:00pm | 37.1% |
| 4:00pm | 40.2% |
| 5:00pm | 30.0% |
| 6:00pm | 25.9% |
| 7:00pm | 25.1% |
| 8:00pm | 17.9% |
| 9:00pm | 12.0% |
| 10:00pm | 12.0% |
| 11:00pm | 8.0% |



Monday through Thursday Daily Average

| Time | % Computers in use |
|---------|--------------------|
| 9:00am | 26.7% |
| 10:00am | 45.0% |
| 11:00am | 53.4% |
| 12:00pm | 57.4% |
| 1:00pm | 64.5% |
| 2:00pm | 44.6% |
| 3:00pm | 45.0% |
| 4:00pm | 48.2% |
| 5:00pm | 36.7% |
| 6:00pm | 32.3% |
| 7:00pm | 31.9% |
| 8:00pm | 21.9% |
| 9:00pm | 14.7% |
| 10:00pm | 12.0% |
| 11:00pm | 8.0% |

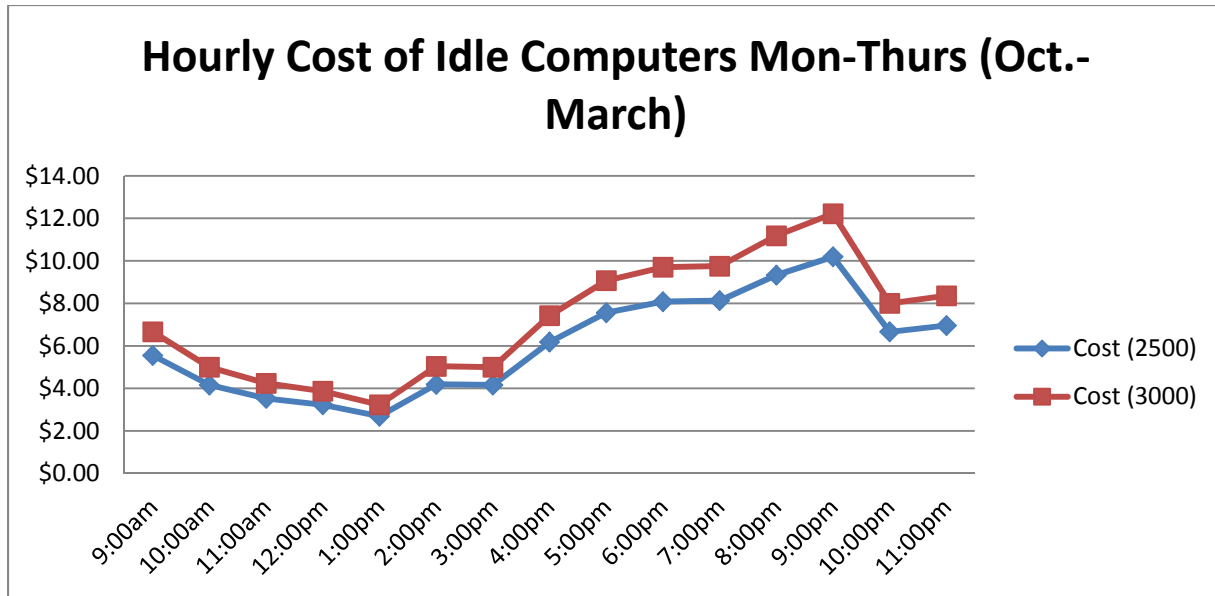


Appendix II: Cost Calculations

| | |
|----------------------------------|----------------------------------|
| 2500 Computer Energy Consumption | 3000 Computer Energy Consumption |
| 91.5 kWh-202.5 kWh | 109.8 kWh-243 kWh |
| Mean:147 | Mean: 176.4 |
| Off-Peak Cost per kWh: \$7.57 | Off-Peak Cost per kWh: \$9.09 |
| On-Peak Cost per kWh: \$11.94 | On-Peak Cost per kWh: \$14.32 |
| Off-Peak per kWh Rate: \$0.0515 | On-Peak per kWh Rate: \$0.0812 |

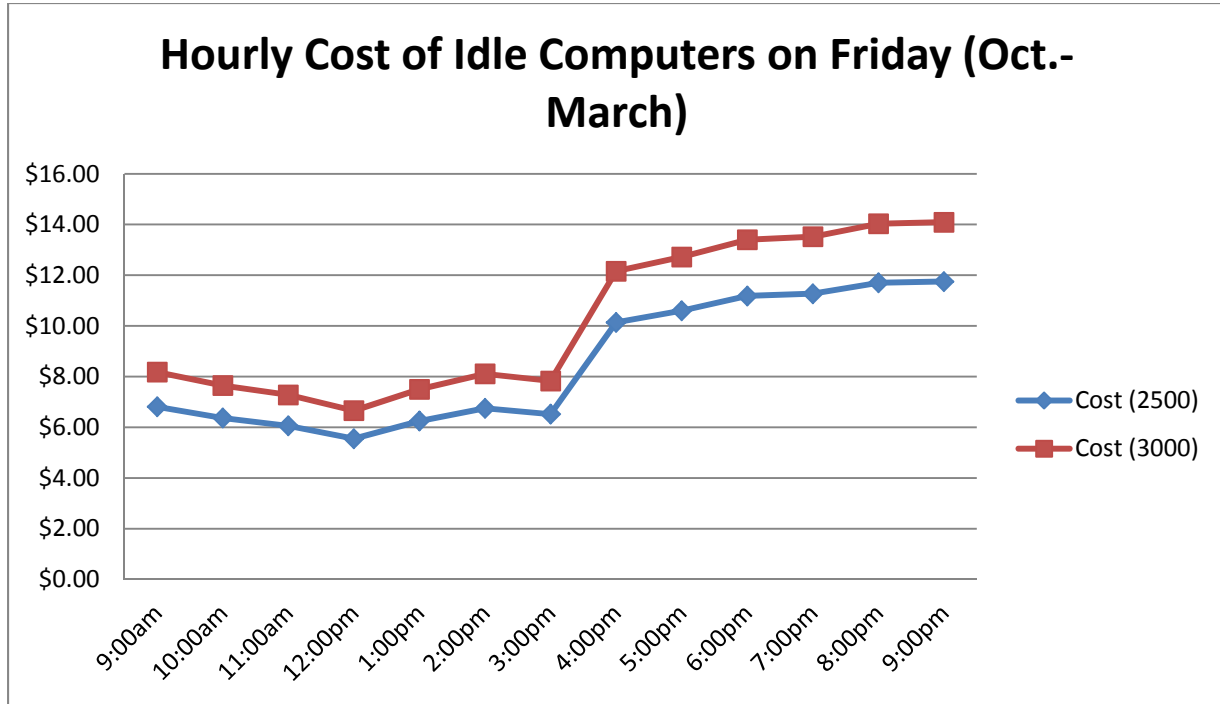
Data for Hourly Cost for Monday - Thursday, October - March

| Time | Cost (2500) | Cost (3000) | % Computers Unused on Campus (Mon-Thurs) |
|------------------|-------------|-------------|--|
| 9:00am | \$5.55 | \$6.66 | 73.3 |
| 10:00am | \$4.16 | \$5.00 | 55 |
| 11:00am | \$3.53 | \$4.24 | 46.6 |
| 12:00pm | \$3.23 | \$3.87 | 42.6 |
| 1:00pm | \$2.69 | \$3.23 | 35.5 |
| 2:00pm | \$4.19 | \$5.04 | 55.4 |
| 3:00pm | \$4.16 | \$5.00 | 55 |
| 4:00pm | \$6.18 | \$7.42 | 51.8 |
| 5:00pm | \$7.56 | \$9.07 | 63.3 |
| 6:00pm | \$8.08 | \$9.70 | 67.7 |
| 7:00pm | \$8.13 | \$9.75 | 68.1 |
| 8:00pm | \$9.33 | \$11.18 | 78.1 |
| 9:00pm | \$10.19 | \$12.22 | 85.3 |
| 10:00pm | \$6.66 | \$8.00 | 88 |
| 11:00pm | \$6.96 | \$8.36 | 92 |
| Daily Total Cost | \$90.60 | \$108.74 | On Peak 4:00pm-10:00pm |



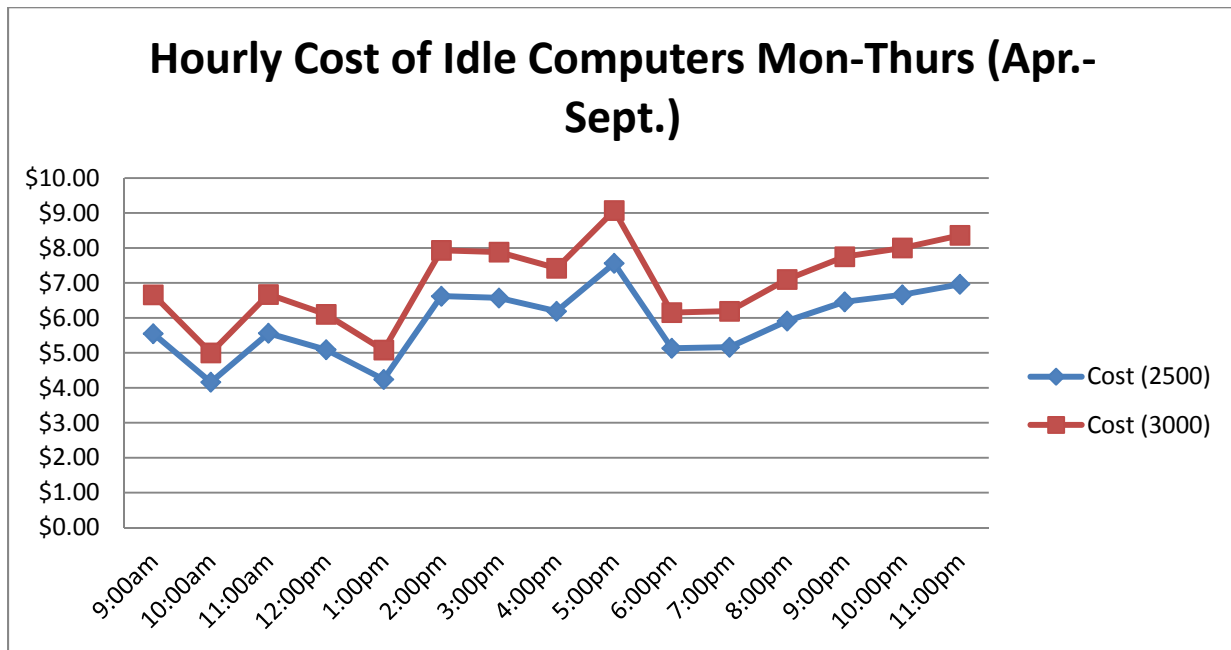
Data for Hourly Cost for Fridays, October - March

| Time | Cost (2500) | Cost (3000) | % Computers Unused on Campus (Friday) |
|------------------|-------------|-------------|---------------------------------------|
| 9:00am | \$6.81 | \$8.18 | 90 |
| 10:00am | \$6.37 | \$7.65 | 84.1 |
| 11:00am | \$6.06 | \$7.28 | 80.1 |
| 12:00pm | \$5.55 | \$6.66 | 73.3 |
| 1:00pm | \$6.25 | \$7.50 | 82.5 |
| 2:00pm | \$6.75 | \$8.11 | 89.2 |
| 3:00pm | \$6.52 | \$7.83 | 86.1 |
| 4:00pm | \$10.14 | \$12.16 | 84.9 |
| 5:00pm | \$10.60 | \$12.72 | 88.8 |
| 6:00pm | \$11.18 | \$13.40 | 93.6 |
| 7:00pm | \$11.27 | \$13.52 | 94.4 |
| 8:00pm | \$11.70 | \$14.03 | 98 |
| 9:00pm | \$11.75 | \$14.09 | 98.4 |
| Daily Total Cost | \$110.95 | \$133.13 | On Peak 4:00pm-10:00pm |



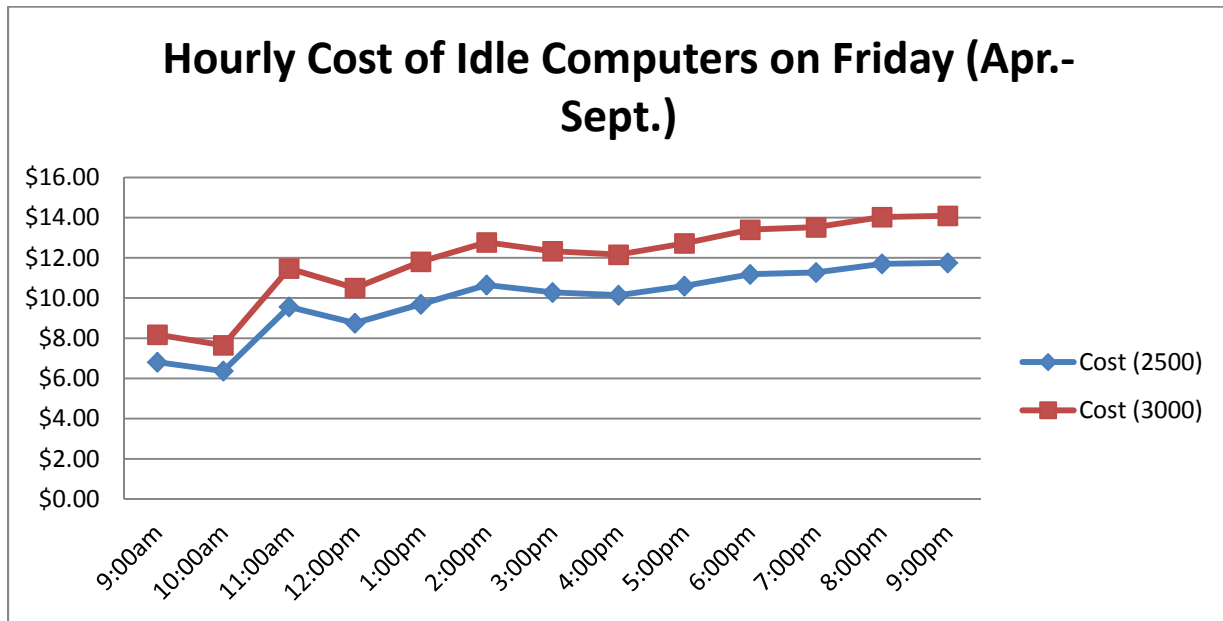
Data for Hourly Cost for Monday - Thursday, April - September

| Time | Cost (2500) | Cost (3000) | % Computers Unused on Campus (Mon-Thurs) |
|------------------|-------------|-------------|--|
| 9:00am | \$5.55 | \$6.66 | 73.3 |
| 10:00am | \$4.16 | \$5.00 | 55 |
| 11:00am | \$5.56 | \$6.67 | 46.6 |
| 12:00pm | \$5.09 | \$6.10 | 42.6 |
| 1:00pm | \$4.24 | \$5.08 | 35.5 |
| 2:00pm | \$6.62 | \$7.93 | 55.4 |
| 3:00pm | \$6.57 | \$7.88 | 55 |
| 4:00pm | \$6.19 | \$7.42 | 51.8 |
| 5:00pm | \$7.56 | \$9.07 | 63.3 |
| 6:00pm | \$5.13 | \$6.15 | 67.7 |
| 7:00pm | \$5.16 | \$6.19 | 68.1 |
| 8:00pm | \$5.91 | \$7.10 | 78.1 |
| 9:00pm | \$6.46 | \$7.75 | 85.3 |
| 10:00pm | \$6.66 | \$8.00 | 88 |
| 11:00pm | \$6.96 | \$8.36 | 92 |
| Daily Total Cost | \$87.82 | \$105.36 | On-Peak 11:00am-6:00pm |



Data for Hourly Cost for Fridays, April - September

| Time | Cost (2500) | Cost (3000) | % Computers Unused on Campus (Friday) |
|------------------|-------------|-------------|---------------------------------------|
| 9:00am | \$6.81 | \$8.18 | 90 |
| 10:00am | \$6.37 | \$7.65 | 84.1 |
| 11:00am | \$9.56 | \$11.47 | 80.1 |
| 12:00pm | \$8.75 | \$10.50 | 73.3 |
| 1:00pm | \$9.69 | \$11.81 | 82.5 |
| 2:00pm | \$10.65 | \$12.77 | 89.2 |
| 3:00pm | \$10.28 | \$12.33 | 86.1 |
| 4:00pm | \$10.14 | \$12.16 | 84.9 |
| 5:00pm | \$10.60 | \$12.72 | 88.8 |
| 6:00pm | \$11.18 | \$13.40 | 93.6 |
| 7:00pm | \$11.27 | \$13.52 | 94.4 |
| 8:00pm | \$11.70 | \$14.03 | 98 |
| 9:00pm | \$11.75 | \$14.09 | 98.4 |
| Daily Total Cost | \$128.75 | \$154.63 | On-Peak 11:00am-6:00pm |

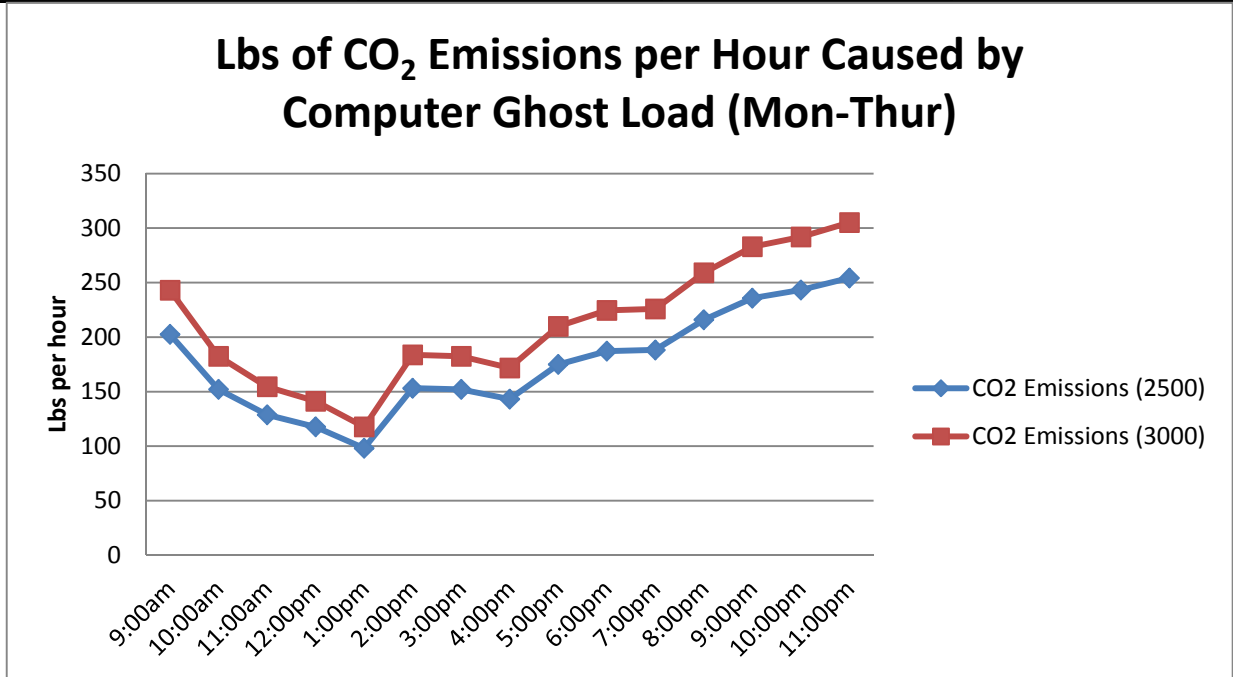


Appendix III: CO₂ Emissions Calculations

| 2500 Computer Energy Consumption | 3000 Computer Energy Consumption |
|---|----------------------------------|
| 91.5 kWh-202.5 kWh | 109.8 kWh-243 kWh |
| Mean:147 | Mean: 176.4 |
| 276.36 lbs/hr | 331.63 lbs/hr |
| 1.88 lbs of CO ₂ emitted per kWh of electricity consumed | |

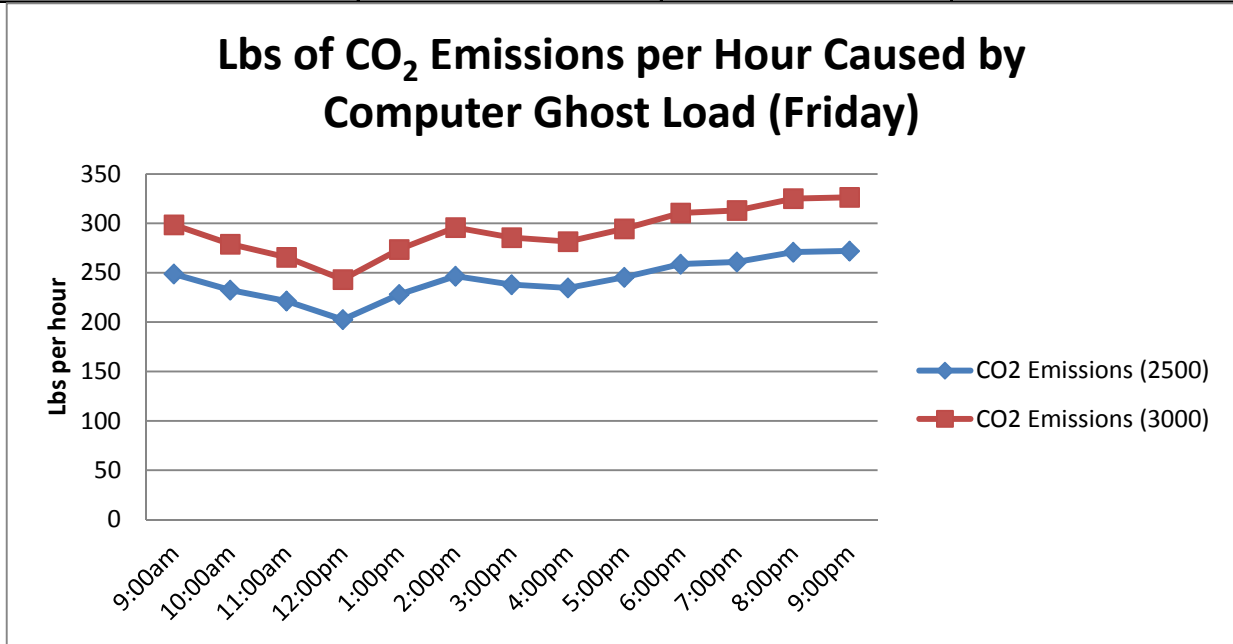
Monday - Thursday lbs of CO₂ Emissions Attributable to Computer Ghost Load

| Time | CO2 Emissions (2500) | CO2 Emissions (3000) | % Unused Computers |
|----------------------------------|----------------------|----------------------|--------------------|
| 9:00am | 202.57 | 243.09 | 73.3 |
| 10:00am | 152 | 182.4 | 55 |
| 11:00am | 128.78 | 154.54 | 46.6 |
| 12:00pm | 117.73 | 141.27 | 42.6 |
| 1:00pm | 98.11 | 117.73 | 35.5 |
| 2:00pm | 153.1 | 183.72 | 55.4 |
| 3:00pm | 152 | 182.4 | 55 |
| 4:00pm | 143.16 | 171.78 | 51.8 |
| 5:00pm | 174.94 | 209.92 | 63.3 |
| 6:00pm | 187.1 | 224.51 | 67.7 |
| 7:00pm | 188.2 | 225.84 | 68.1 |
| 8:00pm | 215.84 | 259 | 78.1 |
| 9:00pm | 235.74 | 282.88 | 85.3 |
| 10:00pm | 243.2 | 291.83 | 88 |
| 11:00pm | 254.25 | 305.1 | 92 |
| Total Daily CO2 Emissions | 2646.72 | 3176.01 | |



Friday lbs of CO₂ Emissions Attributable to Computer Ghost Load

| Time | CO2 Emissions (2500) | CO2 Emissions (3000) | % Unused Computers |
|---------------------------|----------------------|----------------------|--------------------|
| 9:00am | 248.72 | 298.47 | 90 |
| 10:00am | 232.42 | 278.9 | 84.1 |
| 11:00am | 221.36 | 265.64 | 80.1 |
| 12:00pm | 202.57 | 243.09 | 73.3 |
| 1:00pm | 228 | 273.6 | 82.5 |
| 2:00pm | 246.51 | 295.81 | 89.2 |
| 3:00pm | 237.95 | 285.53 | 86.1 |
| 4:00pm | 234.63 | 281.55 | 84.9 |
| 5:00pm | 245.41 | 294.49 | 88.8 |
| 6:00pm | 258.67 | 310.41 | 93.6 |
| 7:00pm | 260.88 | 313.06 | 94.4 |
| 8:00pm | 270.83 | 325 | 98 |
| 9:00pm | 271.94 | 326.32 | 98.4 |
| Total Daily CO2 Emissions | 3159.89 | 3791.87 | |



Appendix IV: Total kWh Used Calculations

| | |
|----------------------------------|----------------------------------|
| 2500 Computer Energy Consumption | 3000 Computer Energy Consumption |
| 91.5 kWh-202.5 kWh | 109.8 kWh-243 kWh |
| Mean: 147 | Mean: 176.4 |

Monday –Thursday Total kWh Attributed to Ghost Load

| Time | Total kWh/Hour (2500) | Total kWh/Hour (3000) | % Computers unused |
|-------------------------------|-----------------------|-----------------------|--------------------|
| 9:00am | 107.751 | 129.301 | 73.3 |
| 10:00am | 80.850 | 97.02 | 55 |
| 11:00am | 68.502 | 82.202 | 46.6 |
| 12:00pm | 62.622 | 75.146 | 42.6 |
| 1:00pm | 52.185 | 62.622 | 35.5 |
| 2:00pm | 81.438 | 97.726 | 55.4 |
| 3:00pm | 80.850 | 97.02 | 55 |
| 4:00pm | 76.146 | 91.375 | 51.8 |
| 5:00pm | 93.051 | 111.661 | 63.3 |
| 6:00pm | 99.519 | 119.582 | 67.7 |
| 7:00pm | 100.107 | 120.128 | 68.1 |
| 8:00pm | 114.807 | 137.768 | 78.1 |
| 9:00pm | 125.391 | 150.469 | 85.3 |
| 10:00pm | 129.360 | 155.232 | 88 |
| 11:00pm | 135.240 | 162.288 | 92 |
| Total Ghost Load (kWh) | 1407.819 | 1689.54 | |

Friday Total kWh Attributed to Ghost Load

| Time | Total kWh/Hour (2500) | Total kWh/Hour (3000) | % Computers unused |
|-------------------------------|-----------------------|-----------------------|--------------------|
| 9:00am | 132.300 | 158.76 | 90 |
| 10:00am | 123.627 | 148.352 | 84.1 |
| 11:00am | 117.747 | 141.296 | 80.1 |
| 12:00pm | 107.751 | 129.301 | 73.3 |
| 1:00pm | 121.275 | 145.53 | 82.5 |
| 2:00pm | 131.124 | 157.348 | 89.2 |
| 3:00pm | 126.567 | 151.88 | 86.1 |
| 4:00pm | 124.803 | 149.764 | 84.9 |
| 5:00pm | 130.536 | 156.643 | 88.8 |
| 6:00pm | 137.592 | 165.11 | 93.6 |
| 7:00pm | 138.768 | 166.522 | 94.4 |
| 8:00pm | 144.060 | 172.872 | 98 |
| 9:00pm | 144.648 | 173.578 | 98.4 |
| Total Ghost Load (kWh) | 1680.798 | 2016.956 | |